

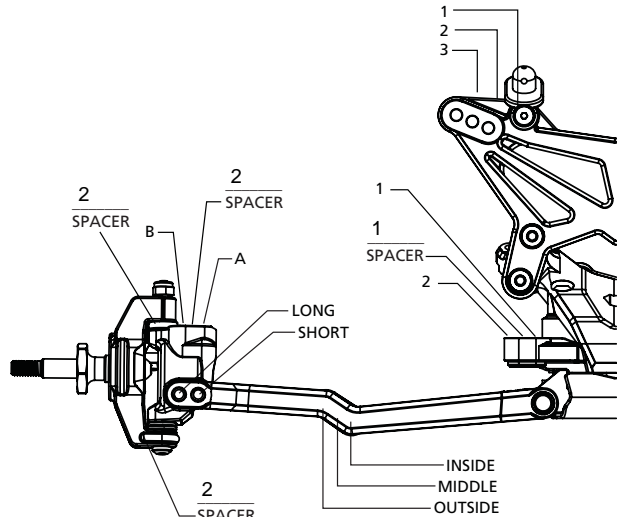
Name: ZEKE BALLINGER Date: 2-11-2018 Event: RUMBLE IN ROCK  
 City: DENVER State: CO Track: MHOR RC RACEWAY



Track  Indoor  Tight  Smooth  Hard Packed  Blue Groove  Wet  Grass  Low Bite  High Bite  
 Conditions  Outdoor  Open  Rough  Loose/Loamy  Dry  Dusty  Astro Turf  Med Bite  Other

**Front Suspension**

Toe: 0  
 Ride Height: 28 BODY OFF Camber: -1  
 Caster: 0° 5°  
 Kick Angle: 20° 25° 30°  
 VLA Setting: Short Arm Long Arm  
 Front Pivot: Alum Plastic HRC Alum HRC  
 Kick Shim: Brass Plastic  
 Oil: 32.5WT TLR  
 Piston: 2X1.6 MACHINED  
 Spring: Standard Low Freq. Color: AE TRUCK GREY  
 Sway Bar: 0.8mm 1.0mm 1.2mm   
 Shock Limiters: 1 Stroke: 28  
 Shock Locations: 2-MIDDLE  
 Spindle Ball Stud: Standard Low Mount  
 Bump Steer Spacers: 1  
 Ackerman Ball Stud: Standard Low Mount  
 Ackerman Spacers: 0  
 Ackerman Arm: #1 #2 #3   
 Trail: 2mm 3mm 4mm  
 Camber Link: 1-A

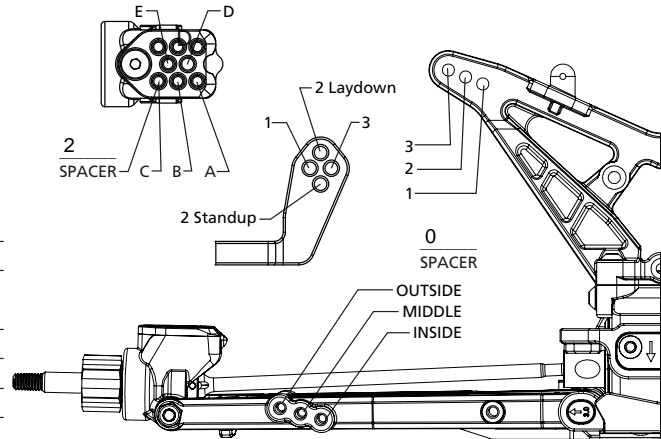


Notes: ALUMINUM SERVO MOUNTS  
 ALUMINUM BELCRANKS

\*\*\*\*\*REAR TOE INSERT 3.5 ARROWS IN\*\*\*\*\*

**Rear Suspension**

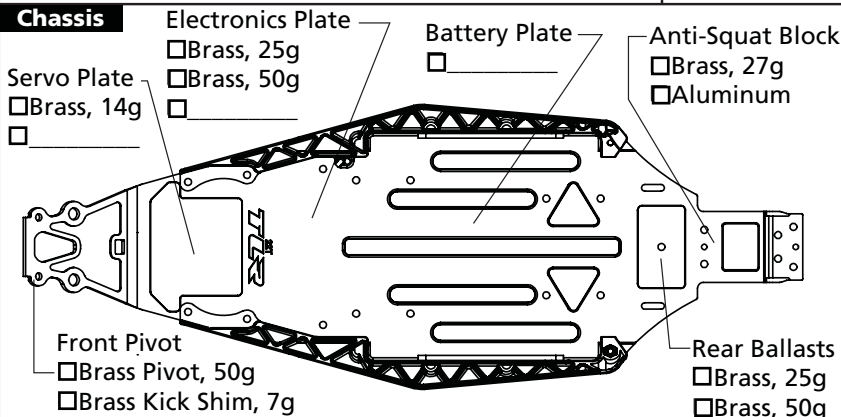
Configuration: Laydown Standup  
 LD Diff. Height: Standard +3.5mm  
 Transmission Type: 3-Gear 4-Gear  
 Toe Inserts: 0.5 1 1.5 2 2.5 3 3.5 4  
 Anti-Squat Inserts: 0 0.5 1 1.5 2 2.5 3  
 Inner Roll Center: LRC HRC  
 Ride Height: 28 BODY OFF Camber: -1  
 Rear Hub Spacing: 2MM FRONT / 2MM REAR  
 Rear Axle Height: Standard +3mm  
 Hex Width: SCT STANDARD  
 Sway Bar: 1.0mm 1.2mm 1.4mm   
 Oil: 30WT TLR  
 Piston: 2X1.7 MACHINED  
 Spring: Standard Low Freq. Color: AE TRUCK GREEN  
 Shock Limiters: 3 Stroke: 32  
 Shock Locations: 2-MIDDLE  
 Shock Mounting: Front Rear  
 Inner Link Spacer: -1mm 0mm +1mm  
 Camber Link: 2-B  
 Battery Position: MIDDLE  
 Diff Type: Ball Gear Setting: STD 1 ROTATION  
 Driveshaft Length: CVA Universal Length:



**Electronics**

Radio: M12S Timing Advance: 20 ON CAN  
 Servo: S6240 Throttle/Brake Expo: 0  
 ESC: ORION HMX Servo Expo: 0  
 Initial Brake: 10 Throttle/Brake EPA: 95/65  
 Drag Brake: 10 Motor: ULTIMATE MODIFIED 6.5T  
 Throttle Profile: Battery: ORION 5000  
 Pinion: 16 Spur: 81

**Chassis**



**Tires**

	Front	Rear
Tire:	PL ELECTRON	PL POSITRON
Compound:	MC	MC
Insert:	PL BLUE	PL BLUE
Additive:	LQD WRENCH	LQD WRENCH

Notes: FULL TI HARDWARE

1902G TOTAL / 833G FRONT / 1068G REAR